



5V 6A / 5V 12A Battery Tester Equipment Independent Control Mode

Our Product Introduction

for more products please visit us on lithiumbatterymachine.com

Basic Information

- Place of Origin: China
- Brand Name: MRBEST
- Certification: CE
- Model Number: CT-4008T-5V6A/ 5V12A
- Minimum Order Quantity: 1 Set
- Price: Negotiable
- Packaging Details: Standard Export Wooden Packing
- Delivery Time: 7-20 working days
- Payment Terms: T/T, Western Union, MoneyGram
- Supply Ability: 500 sets per month



Product Specification

- Name: 5V6A/ 5V12A Battery Tester
- Per Channel Current Range: Range 1: 5 mA~1 A; Range 2: 30mA~6A; Range 3: 60mA~12 A;
- Channel Features: Constant Current Source And Constant Voltage Source With Independent Pairs Of Closed-loop Structure
- Channel Control Mode: Independent Control
- Per Channel Voltage Range: 25mV~5V
- Single-channel Maximum Output Power: 60W
- Highlight: **5V 6A Battery Tester Equipment,**
5V 12A Battery Tester Equipment

Product Description

BTS-4000 Series 5V6A/ 5V12A Battery Tester for Cylindrical Battery, Pouch Battery, Super Capacitor, etc**Model:** BTS-4000 Series 5V6A/ 5V12A Battery Tester

BTS-4000 series entered into market in the year of 2008. Now it is one of the most successful and most popular battery testing system in China and World. Thousands of battery manufacturers, battery research institutes and laboratories use it as their primary testing partner for their various testing activities.

Due to the rapid data acquisition frequency, BTS-4000 could be applied to super capacitor or EDLC (Electronic Double Layer Capacitor) test. Through our advanced software, the capacitance, DCIR(Direct Current Internal Resistance) could be easily calculated.

**Born for Test**

Specialized in testing 18650/26650/21700 Cylindrical Battery, Pouch Battery, Super Capacitor, etc

What's the 5V6A/ 5V12A battery tester's range?

5V6A	
Range 1:	100mA
Range 2:	3A
Range 3:	6A

5V12A	
Range 1:	1A
Range 2:	6A
Range 3:	12A

How to understand the triple range for battery tester?

If you have 8 channels 5V6A battery tester with triple range. There will be triple range as below:

Range1: 0.5mA~100mA; Range2: 100mA~3A; Range3: 3A~6A.

Example: Using 50mA current to charge/discharge, the actually current should not be 50mA, it should has deviation value base on the range. If you have older 5V6A tester which has single range, so the output current will be 47mA~53mA. It has 3mA deviation value ($3mA = 6000mA \times 0.05\%$); If you have triple range 5V6A battery tester, so the output current will be 49.95mA~50.05mA. (The 50mA current output in the first range). It has 0.05mA deviation value ($0.05mA = 100mA \times 100mA$). It

highly improve the accuracy when you set different current.

The same with 5V12A or other multi range Neware battery tester.

How to understand the minimum discharge voltage for battery tester?

As to Standard model for 5V6A/ 5V12A Battery Tester, they has standard minimum discharge voltage as below:

5V6A: 1.0V (by using cylindrical clamp); 1.5V (with 2.0m length of testing cable)

5V12A: 2.0V (by using cylindrical clamp); 2.5V (with 2.0m length of testing cable)

Need lower minimum discharge voltage? Don't worry, MRBEST still can do this. MRBEST special power supply to support down to 0V~

How to understand the fixture of battery tester?

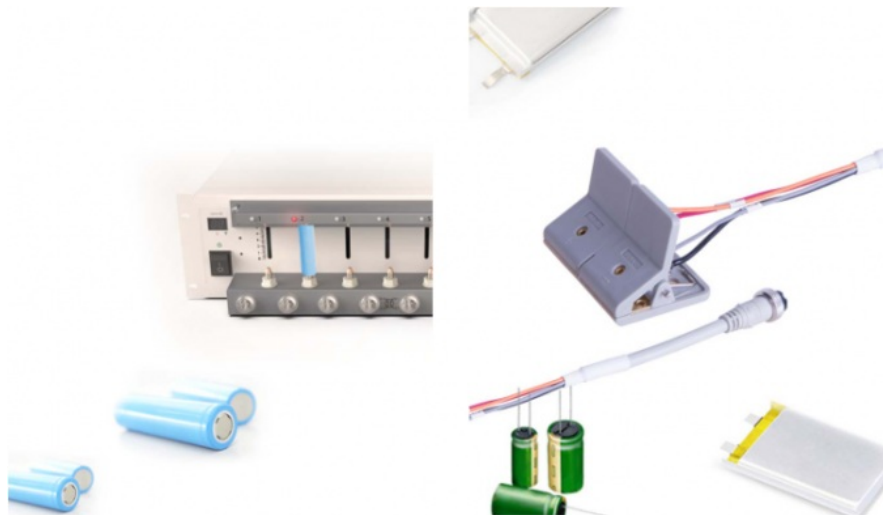
MRBEST offer various different clamps to meet the different batteries, so our user can easilier to connect your battery and focus on battery testing.

As to 5V6A & 5V12A battery tester, they have same clamps for cylindrical clamps, air-plug(connect alligator clamps or polymer clamps). The cylindrical clamp has adjustable height. You just use the straight screwdriver to adjust height, even use a coin. Wonderful, right?

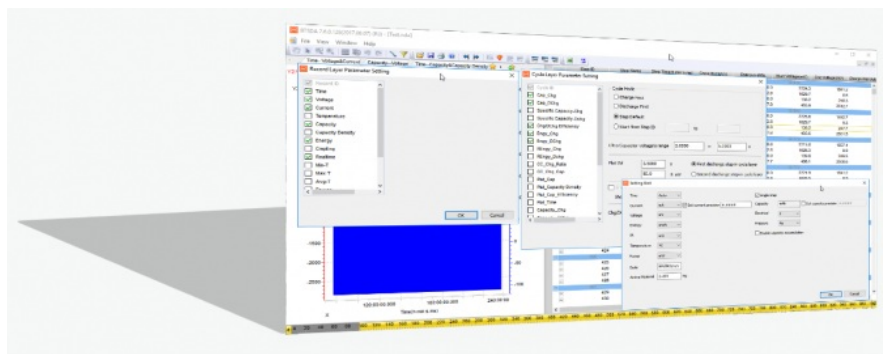
Various types of batteries to be test

Different clamps can be supported.

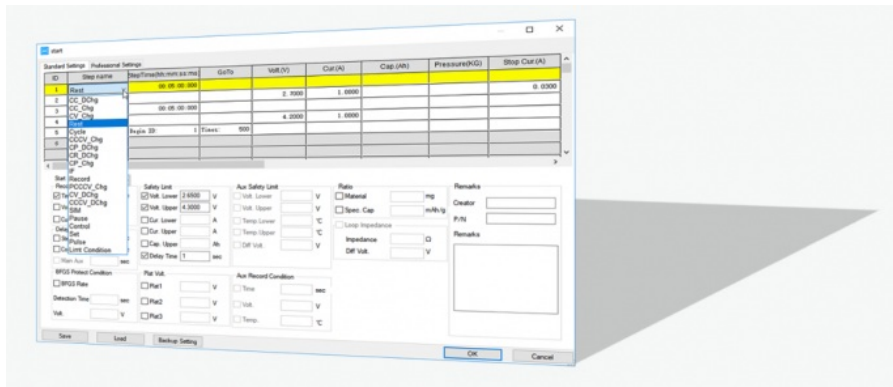
- * Coin cell clamps
- * Cylindrical holder
- * Pouch Clamps
- * Alligator Clamps
- * Ring nose connector



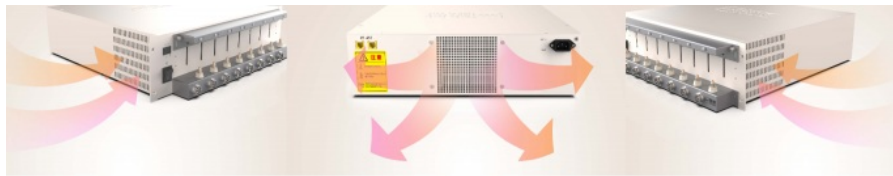
**Easy and convenient to check testing data, help you analysis data quickly!
(Voltage, Current, Capacity, DCIR, HPPC, Cycle Life, etc.)**






Not only the cylindrical battery can be test, but also tester can test the pouch battery.



Special design fan, to make sure all tests are good. Prevent over high temperature.



 **Shenzhen Meirui Zhida Technology Co., Ltd.**

 +86 19866156608  tina@szmrbest.com  lithiumbattery-machine.com

104 Building 6, Second Industrial Zone, Shanmen Community, Yanluo Street, Baoan District, Shenzhen China